

ALNWICK DOTES

**Eco-friendly
farming
at Lowick**

December
2011



The magazine of the
Rotary Club of Alnwick



December 2011
The magazine of the **Rotary Club of Alnwick**

ALNWICK DOTES

Cover picture - Hunting Hall farm, Lowick (see page 10)

PRESIDENTIALLY...

President, what a grand title. And it's a privileged position to hold. However I feel that I am but a small cog inside the big wheel that is Rotary. Rotary is made up of many cogs and each is as important as the next and all need to work in unison.

The start of my year back in July was unsettling with the loss of so many much loved Rotarians and age creeping up, but fellowship is a binding force that will enable us to look forward with confidence. We have set ourselves some challenging goals, some long term, others nearer in time and others ongoing.



James Bateman

The setting up of a satellite club (or clubs) is a three year project and everybody within the club can contribute and feel that their involvement will lead to a successful conclusion. We cannot know at the moment where it will lead, so let the ideas flow to enable this club to grow and be a leader for the future of Rotary.

We are also now starting to think and plan for our 75th anniversary. It is an important event and each time I wear the President's chain of office it is a reminder to all in the club of those who have gone before. So, think ahead so that this celebration will be worthy of all past and present members of the Rotary Club of Alnwick.

And what of the present? Fellowship at the Christmas lunch with the big bag pack to raise funds for this year's charities which will be the final event of the year.

Finally, I wish to thank all those within the Club for their work so far this year. It is heartening to see the enthusiasm of all those in the sub-committees. Well done everybody.

James Bateman

THE LONG VIEW

In company with Rotarians, the question was asked; "Do we do enough Rotary 'stuff' in our club?". In my mind the answer, as you would imagine, is a resounding yes! We support nationally, internationally, and locally we support both financially and in service, all of which are important boxes to be able to tick. Underpinning all of this is the friendships we have with our fellow Rotarians, which are a very important part of Rotary for me. I have never spent time with such a diverse bunch of folk and I appreciate all that I learn from them.

Moving back to Rothbury at the beginning of December is a joy (apart from the packing of course) – sometimes you just don't know what you've got 'till it's gone, so I reckon we were thrown a lifeline when the house sale fell through and Terry's work load with Bundaberg increased. I suppose we learned from



Marion Long

the experience and revisited the old edict that nothing is written in stone.

By now you may or may not have realised that my theme for my piece here is 'learning' – it would be sad if, at the end of the day we go to our beds thinking we haven't learned one

single thing – that will never happen, naturally.

I think the best kind of learning is that which comes as a surprise, in a recent email from our lovely friend Andrea Baker she thanked me for "helping her to find the joy in making music again". It had never occurred to me that singing could just be her job and something as simple as singing with a school choir could promote such a feeling! So thanks Rotary and Rotarians for a continued learning experience.

Marion Long



Duke's School

a record amount of money, over £1,000, enough to buy a Shelterbox as well as several Aquaboxes. The Shelterbox charity provides a box containing a tent, bedding, cooking facilities and other accessories to provide accommodation for ten people for up to six months. In fact the 27,000 Shelterboxes sent by Rotarians to Haiti are still being used today!

CROFTWAY PRIMARY SCHOOL 17/10/11

Rotarian Elaine Smith is a governor of Croftway Primary School in Blyth. After a recent musical Harvest Festival members of the School Council representing all the pupils proudly displayed their donations to the Aquabox charity organised in conjunction with the Rotary Club of Alnwick.

NEW GENERATIONS

DUKE'S SCHOOL FUN RUN 12/07/11

On Tuesday, 12th July, a special assembly was held at the Duke's School when immediate past president, Terry Long, accepted a cheque from the school council on behalf of the Rotary Club of Alnwick and left a Shelterbox for the enthusiastic pupils to explore. The youngsters were excited to learn that their box, identified by a unique number, could be followed on the Shelterbox website.

The pupils of the Duke's School had organised a charity fancy dress fun run at the end of May to raise money for Aquaboxes, which provide a means of purifying water in disaster areas. In fact they raised



Croftway

Aquaboxes are packed with everyday necessities like soap, toothpaste, nappies, disinfectant, etc. and are equipped to prepare and store purified and filtered water. They are sent to disaster areas all over the world and are currently in use in East Africa, Pakistan, Thailand and the Philippines. As a result of these children's generosity many lives will be saved.

GOLF DAY

Alnwick Rotary Club raises over £6,000 for charity

On 23rd June, 54 teams of 4 players per team competed in the tenth annual Alnwick Rotary Club Charity Golf Day held, courtesy of the owners, at the wonderful parkland golf course at the Burgham Park Golf & Leisure Club near Felton. From a combination of entry fees, raffles, sponsorship and donations, over £6,000 was raised for Rotary charities. The major beneficiaries this year are the Great North Air Ambulance, MacMillan Cancer Support & Mary's Meals (a world wide campaign to provide free meals in schools where poverty and hunger prevent children from being in education). Representatives of the three organisations were each presented with a cheque for £1,000 from the then Club President Terry Long. President Terry said, "As well as our nominated charities we will not forget local good causes that deserve our assistance."

The prizewinners this year were:-

	Prize	Winner
Rotary Team Challenge Cup - 1st	Round of golf for four players at Alnmouth (Foxton Hall) Golf Club – plus a dozen Pro VI Golf Balls for each team member	Proudlock's House & Home 94 points

2nd	Round of golf for four players at Burgham Park Golf Club – plus a 2 boxed crystal glasses donated by Rtn & Mrs L Bilboe for each team member	Vision2Learn 92 points
3rd	Round of golf at Westerhope Golf Club - plus two sleeves of Srixon golf balls for each team member	Golfers of the N.E - Team 1 91 points
4th	Round of golf for four players at Dunstanburgh Castle Golf Club - plus a golf umbrella for each team member	Golfers of the N.E - Team 2 89 points
5th	Round of golf for four players at Alnwick Golf Club - plus a sleeve of Srixon golf balls for each team member	Alnwick Masters 89 points
6th	Round of golf for four players at Garsefield Golf Club	Morpeth Rotary Club 88 points
Best Ladies Team Score	£25 Marks & Spencer voucher for each team member donated by Balfour Beatty Plc	Friends
Nearest the Pin - at the 10th hole (Gentlemen)	Golf bag donated by Mr John Mayfield	William Bell (28cm)
Nearest the Pin - in 2 shots at the 18th hole	Bottle of Malt Whisky	Neil Pickard (6'7")

Billy Bell



Terry Long with (L-R) Richard Blackshaw representing our major sponsor, Blackshaws, and the winning team from Proudlock's House & Home - Russell Dick, Steve Grant, John Baynan & Gary Proudlock

IN AND AROUND

GAZETTE PHOTOGRAPHER

16/06/11

On 16th June, it was my pleasure to introduce the speaker for the meeting, Jane Coltman photographer for the Northumberland Gazette. As I had already seen her work at a Inner Wheel meeting, I knew we would be interested in and entertained by the slides which she had brought with her.



Jane Coltman

I am sure I can speak for all of our members who attended the meeting that there was something for everyone to enjoy, from the amusing, to the unusual shots her camera captured in a split second, to the last slides of the remembrance day ceremony.

We spent a very pleasant lunch-time admiring a professional's work. I for one was inspired to be patient in the use of my camera instead of being, in the words of my husband, "trigger happy". Thank goodness for the digital shots which can be deleted!

Margaret Thompson

CLUB HANDOVER

30/06/11

At the end of June, James Bateman became our President for the 2011-2012 Rotary year. The photograph shows James (left) being congratulated by outgoing President, Terry Long.

Terry's wife, Marion Long, has become the new Senior-Vice President (or President-Elect in Rotary-speak) and Elaine Smith has become Junior Vice-President (or President-nominee).



DONALD MCBANE

21/07/11

Continuing our close association with the Northumberland Gazette, local reporter (and historic weapons expert) Robert Brooks entertained the Club in July with a talk about Donald McBane.

The 15th century, Inverness-born soldier, swordsman and adventurer served with the Royal Scots under Marlborough throughout Europe and the British Isles. McBane is known for his book "The Expert Swordsman's Companion" and for his



Robert Brooks

escape from the Jacobites at the Battle of Killiecrankie in 1689 when he cleared the pass at the point now famously known as the 'Soldier's Leap'.

Robert described a character even more colourful than George MacDonald Fraser's Flashman. McBane kept an alehouse and a school of arms in London. He was still duelling in Edinburgh in 1726 when at the age of 63 Donald finally resolved to fight no more and "repent my former wickedness".

DENNIS DALBY

1/9/11

Dennis Dalby is very proudly a "lucky so-and-so" and in September he entertained us all with stories from his life in the RAF, in the gas industry and as a



Lucky Dennis

young groom and then family man. At all the critical moments everything fell into place for Dennis and he was able to exclaim with relief "Lucky Me!". There are too many stories to repeat here but Dennis has given a further instalment for this edition of AlnwickDotes which can be found on page 16.



BRUNCH - 1

09/09/11

Every year a group of students from St. Cloud University (Minnesota) stays at Alnwick Castle as part of their course. Jim Thompson of Alnwick Rotary Club invited a party of the students, led by Brad Sleeper, also a Rotarian, to a special self-catering lunch at St. Michael's Church Hall.



Marion Long and Elaine Smith led the cooking team in the kitchen and everyone joined in the serving and clearing up to make the meeting a great success.

The photograph below left shows the students with the President, James Bateman together with Jim Thompson and Brad Sleeper. Brad returned with a second group on the 6th of October and presented James Bateman with a banner from his home club of Wayzata, Minnesota.



Brad Sleeper

SEATON DELAVAL HALL

29/09/11

On the last Thursday in September we were entertained by Elizabeth Finch, a fluent and enthusiastic representative of the National Trust, with a lively history of Delaval Hall and its owners. The National Trust took over the Hall in 2009 and the doors were opened to the public in the following May.

The original Delavals came to England with William the Conqueror and were given land in Northumberland in return for their loyalty. They became wealthy by exploiting rich seams of coal under their land, even building their own private port at Seaton Sluice.



Elizabeth Finch

Elizabeth described how Admiral George Delaval, who had made a fortune as a foreign envoy for Queen Anne, commissioned Sir John Vanbrugh to design the Hall after the original house was demolished. The new mansion was built between 1719 and 1732 but the Admiral never saw the finished building as he died in a riding accident in 1723. It was his nephew, Captain Francis Delaval, who inherited, and, after a marriage to the heiress of Ford Castle, the flamboyant life of the "Gay Delavals" began.

Eventually the two estates (Ford and Seaton Delaval) were separated by one Edward Delaval, a Cambridge academic, who gave the Hall to his sister who had married into an old Norfolk family, the Astleys. But

there was no-one in residence one January night in 1822 when fire destroyed most of the central section of the house.

The house remained unoccupied until the 1980s when Edward Delaval Henry Astley (22nd Baron Hastings) moved into the west wing, which remained his home until his death in 2007. The new Baron Hastings, faced with Inheritance Tax, was forced to sell the Hall. The National Trust launched an appeal for £6.3m and announced the success of its appeal in 2009.

AEROSPACE BATTLE MANAGEMENT 27/10/11

On the last Thursday in October Wing Commander Lyn McManus of Boulmer RAF base, a potential Rotarian herself, quickly won the full attention of the Rotary Club of Alnwick as she described the operations of the air base and her responsibilities within it.



She described how the airbase was like many other small communities with its own school, daycare centre, sports facilities and medical centre. She manages some 700 students per year and as Aerospace

Battle Manager is responsible for controlling the NATO airspace over Britain, Iceland and parts of Scandinavia, one of the busiest areas of airspace in the world.

Until the turn of the century this involved mainly military aircraft, for example watching for Russian spy planes, but September 11th changed everything and now the Boulmer operators also keep track of commercial air traffic watching for unusual behaviour. Such flights must report when they move from one area to another and Lyn told how she has authority to send fighter aeroplanes to intercept if they do not. The operations room can not only

contact a senior government representative for an emergency, high level decision, but also regularly exchanges information with the CID, the early warning station at Fylingdales, and other agencies concerned with flight control and possible terrorism.

At the end of the meeting the group felt very confident that the security of the airspace above Britain was in very secure hands.

THE HOSPICE

03/11/11



Jill Clark (left above) is shown introducing Julie Mawer and Debbie Allan from HospiceCare North Northumberland who came to give us an outline of the work of the Hospice. In particular they highlighted ten things we need to know about the Hospice:

1. HospiceCare, the most northerly Hospice in England with centres in Alnwick & Berwick, was founded in 1995.
2. They serve a community of 57,000 in one of the most sparsely populated rural areas in England.
3. Their annual running costs for 2010 are around £300,000 – that's £1,250 per working day or £3.00 per working minute!
4. They receive just 15% of our annual costs from the NHS, we have to raise about a quarter of a million pounds each year from the local community & other sources.
5. Their team of over 100 volunteers save them over £55,000 per year.

6. They provide care and support for over 250 patients and their families each year, – that’s an increase of 100% in the last two years!
7. Despite their catchment area containing the largest percentage of people over 65 years in the North East the demand for appointments for the 30+ age group is increasing.
8. Their Hospice at Home service helps provide short term respite for patients and their families together with expert end-of-life care at home.
9. Their Bereavement Support Service is available to all – even those who have had no previous contact with the Hospice.
10. They are a truly local charity providing a unique invaluable service to the local community.

LIONHEART RADIO - 107.3FM 17/11/11

On the day the Rotary Club of Alnwick played host to the Blyth Club for the district quiz^[1], the members were treated to a presentation by Daniel Mumby, the business development manager of our local community radio station, 'Lionheart Radio'. Daniel, a history and politics graduate of Warwick University honed his skills in local radio with radio Warwick, hosting shows for which he won national awards.



Daniel Mumby

He joined Lionheart Radio as Business Development Manager in April 2010 as the only paid employee and is also a presenter. All the other people involved with the

station, including presenters and even the manager, Ann Howie, are volunteers.

Daniel explained how the station aimed to be a forum, a hub for the local community to express its views and ideas, looking for groups such as Rotary

¹ A quiz which the Alnwick team won - or so the Club's PRO (and incidentally a member of that team) has asked me to point out! Ed.

to be involved. While running costs are clearly a big issue, a question which was not asked due to time constraints was the cost of running the station. With all of the licences and permissions required he talks of £30,000 per year so, like so many other organisations, the station is always desperately looking for funding.

Daniel's presentation was polished and informative and was well received by his audience. One of his favourite quotations bore true. His talk was like a lady's dress; long enough to cover the subject but short enough to be interesting.

BRUNCH - 2

24/11/11

After the success of the Brunch at St Michael's Church Hall earlier in September, the self-catering resources of the club were again given full rein in November, this time in the kitchens of the Masonic Lodge. A



Souper-women

splendid choice of nourishing soups and enticing sweets was duly produced by a team which this humble scribe feels inspired to describe as "a sweet bunch of souper-women".^[2]

EUROPEAN MARINE SITE

01/12/11

On the opening Thursday of December the Alnwick Rotarians were entertained and informed by a presentation from Claire Carey, the Implementation Officer of the Berwickshire and North Northumberland Coast European Marine Site. She spoke with authority and enthusiasm as an inspiring, knowledgeable and committed advocate for the conservation of the local marine environment. The Alnwick Rotarians have already taken responsibility

² Some people will say anything to get second helpings!



Claire Carey

for maintaining an area of beach at Boulmer, but the actual European Marine Site (EMS) extends from Alnmouth to Fast Castle Head in Scotland, an area of some 635 sq km which includes Lindisfarne and the Farne Islands. Claire briefly mentioned some of the challenges

she faces having to operate with twenty seven local authorities in two countries with different legal systems.

She went on to describe how the varied geology, from the Whin Sill and limestone cliffs to sandy beaches and rock pools, provides suitable environments for many different species of wildlife including rare birds, a large seal colony, sponges, shellfish, algae and seaweed. Even coral is found along this coast, which surprised many in the audience. Claire continued by describing in more detail some of the other wildlife: the hermit

Cloak Anemone



Brittle stars



crab and the cloak anemone which live in a symbiotic relationship so close that they cannot survive apart, the brittle stars that live in colonies wafting food particles amongst them, and the starfish which feed on mussels clinging to the rocks. This latter description, which involved the starfish stomach enveloping its prey, left many in the audience glad that our lunch had been completed before the talk began!

WINNERS

Rotarian of the Year

In June Terry Long congratulated Elaine Smith on being selected as the Rotarian of the Year for 2010-11 - an honour richly deserved for all her hard work especially in schools. Unusually, Elaine seemed a little nonplussed by the whole affair.



Golf

Peter Lewis, on the other hand, looked very tickled when he was given the Club's Golf competition cup by Marion Long on 1st September.





Bridge

Graham Smith's cheesy grin^[1] as he was presented (right above) with "some Bridge trophy or other" was only one small external sign of his internal pride and jubilation at this amazing and unexpected triumph^[2].

Quiz Team

17/11/11

No list of winners would be complete without some brief mention of Alnwick's quiz team, recently weakened by the addition of two substitutes from the Club's editorial team. On the 17th November the Club played host to the Blyth Club for an early round of the District 1030 quiz and, despite the substitutions, the Alnwick team of Alan Jones, John Humphries, Graham Smith and Colin Bradford prevailed on the day. And so to the next round...

on several wildlife projects with local children and young people.

We were escorted around the farm by Karen, who proved to be an enthusiastic and knowledgeable guide. We heard how the hedges were planted and cut to provide flowers and berries, and strips of land around the edges of the fields were sown with wild grasses and plants to create a habitat for wildlife.

The trail included visits to two ponds, a three acre wood, an otter-friendly wetland area and the Lowick Community Orchard, where a selection of unusual varieties of fruit trees has been planted. We learned a great deal about conservation (Hunting Hall belongs to Defra's Countryside Stewardship Scheme) and even saw wild deer and hares for ourselves.

Graham Smith



Karen Burn

THE HERMITAGE

03/08/11

Billy Bell's wonderful programme of Talk 'n Toddle visits led us to the Hermitage at Warkworth in August. The first excitement of the day was the need to cross the Coquet by ferry. Fortunately the ferryman/guide

OUT AND ABOUT

HUNTING HALL

21/07/11

A group of us from Alnwick Rotary Club enjoyed a visit to the eco-friendly Hunting Hall Farm near Lowick in North Northumberland. This small family farm is run by Tom and Karen Burn who are youth leaders with the Northumberland Wildlife Trust and have worked

1 Or should that be "winning smile"?

2 At least that's what I think he said. Ed.



Crossing the Coquet



had a steady hand with a camera as well as with oars.

It is interesting to compare these two 1814 engravings of the Hermitage with the two "snaps" taken on our visit. Nothing much has changed in two centuries - apart from the frocks!

Colin Bradford



BEACHWATCH AT BOULMER

17/09/11

Alnwick Rotarians have officially adopted a stretch of Boulmer Beach and a group took part in the National 'Beachwatch' weekend on Saturday morning, 17th of September with seven members, two volunteers and Claire Carey who is a European Marine Site Implementation Officer. She has a complex and interesting job and has agreed to come to one of our regular Thursday lunchtime meetings in December to give us a talk.

We monitored a kilometre of Boulmer Beach, which has been approved and adopted by the Rotary Club of Alnwick. An enjoyable morning in the welcome sunshine also gave us fun and fellowship while we collected five sacks of debris. We worked in groups of three: two collecting and one recording.

The information on the litter pick has been collated and sent to the Marine Conservation Society [MCS]. These results will be added to the National beach litter database and will support the campaign to raise awareness of the problems facing the marine environment at local and national levels.

A range of litter was recorded from a dead baby seal, springs from a bed and a piece of a boat to many plastic bags and shards of pottery and glass. Unfortunately near the fishing boat area there seems to be evidence of dumped building materials. However on the whole, especially due to the neap tides, the beach is safe and clean.



We will continue to monitor the beach this winter and in the Spring and Summer months of 2012.

Diane Pearson

DON LESLIE MEMORIAL WALK 18/09/11

Members of the club with ladies of Inner wheel and friends are shown below in the shadow of Bamburgh Castle as they set off on the 13.5 mile walk along the coast line to Craster in memory of the late Don Leslie.



Don completed the walk many times raising monies for leukaemia research having lost a son to the disease.

Ken Moore

A COQUETDALE TRAIL 24/09/11

On the last Saturday in September a group of Rotarians, mainly from the Alnwick Club, took time off raising funds for charity to enjoy a travelling

quiz along the Coquet valley west of Rothbury. Fortunately the weather was kind and all were grateful to Martin and Diane Pearson for organising a fun day out.

The trail started in Rothbury, then after a coffee break the group went up to Lordenshaw to examine the cup and ring marks preserved there, and to attempt to identify the three main peaks of the Cheviot Hills. Onward to the Simonside Forest Walks for more questions and down to Great Tosson to examine the remains of a tower which many people had never noticed before. By this time several participants were looking across the valley to Thropton and thinking thirstily of the friendly taverns there.

But the trail continued through Bickerton past Holystone Grange (how many stone balls are there on the gateposts?) before ending at the car park just beyond Holystone, with a short walk to discover the last few answers at the Lady's Well (*below*).



It was unanimously decided that the only way to end such a successful day out was to complete the round trip with a visit to the pub in Rothbury. And so it ended, with the grateful group donating a total of £90 to Rotary charities.

Graham Smith

END POLIO NOW 22/10/11

On Saturday, 22nd October a group from the Rotary Club of Alnwick manned a stall in the Market Place in recognition of World Polio Day and to promote the Rotarian charity "End Polio Now!"



US\$200m by June 2012. Rotary International is confident it can meet the challenge and is well on the way to doing so.

Graham Smith

OWL SANCTUARY

07/10/11

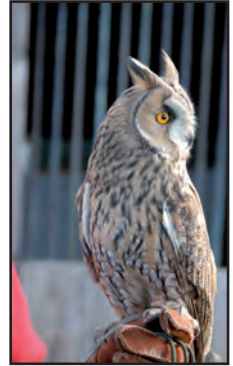
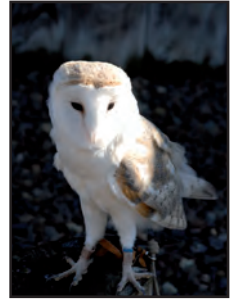
Polio has no cure, but it is preventable by vaccination. It can maim or kill young children; many pensioners may remember school friends who were affected by the disease. When the campaign was launched twenty five years ago in conjunction with the World Health Organisation, polio was endemic in 125 countries. The results have been astounding: it is now confined to just four countries – Afghanistan, India, Pakistan and Nigeria.

Thanks to a massive immunisation programme two billion children have been protected from the disease and millions of lives have been saved. The Bill and Melinda Gates Foundation has already donated US\$355m and challenged Rotary to raise another

The Trewitly Owl Trust is based on a working farm just outside Longhorsley. The trust has recently been granted charitable status to run a bird of prey rescue centre and to keep captive bred, hand reared birds of prey (mainly indigenous owls) to show to the public and to take to schools. The purpose of these demonstrations being to allow an unusually close up view of the birds and so promote an awareness of them and their habitat.

Early in October Nicola Wallis from the Trust very kindly gave a group of us from Alnwick an introduction to the work of the Trust and showed us the owls and hawks living in the Sanctuary.

Billy Bell



OBITUARY

FRED DYSON

1933 - 2011

Fred was born in Huddersfield in 1933, the eldest of seven children. He lost his sight at the age of twelve which put him out of mainstream education. However, his enquiring mind and determined nature led him to learn all there was to learn about a wide range of subjects, including astronomy and palaeontology. He loved literature and the arts, his forte being poetry. If Fred was asked a question which he could not readily answer he would always endeavour to find the answer

Fred qualified as a physiotherapist and met his wife Sheila at Aylesbury where they both worked as physiotherapists. Moving to Alnwick in 1959 they set up a practice in Bondgate Without and had three children. He became heavily involved in the town becoming a member of the Town Council, Chairman of the Alnwick and District Round Table, Young Conservatives and the Rotary Club of Alnwick. He was also a founder member of the Bailiffgate Museum. As a lover of music he wrote reviews for the Alnwick and District music society of which he was an avid supporter

Fred joined the Rotary Club of Alnwick in 1983, his category being Physiotherapist. He served the club well, becoming Club president in 1993. He was the captain of the club's quiz team and was made a Paul Harris Fellow in 1997.

In 1992 he appeared on the Mastermind TV programme, his specialist subject being the history of the Percy Family. He lost out on getting to the next round by just one point.



Fred Dyson

In June health problems saw Fred move to the Castle View care home where after two months he died. He was a great guy who got on with everyone. He is sadly missed.

Ken Moore

WHAT'S IN YOUR LAPEL?

BRUNEI

A badge which I occasionally wear reminds me of my first Rotary Club. The badge was distributed to members to mark independence for the Sultanate of Brunei on January 1st 1984.



The four sections of the badge can be explained as follows. Easily recognised and familiar is the Rotary Wheel, so no further comment is necessary.

The flag is the national flag of Brunei. The design was initially adopted in September 1954 when the sultanate was still a British Protectorate. Yellow is a royal colour and I remember briefings to ex-pats saying that yellow clothes were not to be worn in the presence of the Brunei royal family. On the centre of the flag is the red national crest. Invisible on this miniature is the wording inscribed in Jawi script on the scroll beneath the crest. Jawi being the Arabic alphabet in which Malay was written prior to its present roman form. There are two phrases. The first states 'Brunei Darussalam', (Brunei Abode of Peace). The second phrase translates as



“always in service with God’s guidance”. It signifies the country’s Islamic beliefs but it is also apposite, coincidentally, to the aims of Rotary.

The upper strip of the badge proclaims Belait Club. During the period I worked in the sultanate, there were two Rotary Clubs, one at each end of the state, Bandar Seri Begawan in the capital and sixty odd miles away the Belait Club. Members were drawn from the two towns Kuala Belait and Seria. Founded in the early seventies, it was an unusual club because a majority of members all worked for the same company, Brunei Shell Petroleum, or BSP for short. Such is the diversity of the industry all aspects of the oil and liquid natural gas development and production and associated support departments for personnel, education, and medical services were represented creating a balanced membership. Local citizens representing the Malay, Chinese and Asian communities formed the other members.

I checked a list of members for 1981-1982, the year I left Brunei after seven happy years with BSP. There were ten Brits, nine Indian Asians both local and from the Malaysian peninsula, two Germans, four Dutch, three local Chinese, three indigent Brunei Malays, two Americans, a Filipino and a Nigerian. Clearly the club was a microcosm of Rotary International.

The last segment of the badge states “D 330 Brunei”. District 330 encompassed clubs in four nations, Thailand, Malaysia, Singapore and Brunei and had been created in 1961. Prior to that, it formed part of District 80 which grew as Rotary expanded from

its first toe-holds in South-East Asia, Malaya 1929 and Thailand 1930.

There has been further district dichotomy as Brunei is now part of District 3310 with clubs in Malaysia, south of Malacca, Singapore and, within Borneo, in Brunei, Sabah and Sarawak.

When a Rotarian is inducted, he is commanded to “wear this badge with pride”. I do.

Alan Jones

ROTARY WHEEL

Old news for many; perhaps new to some

The Rotary emblem, unchanged since 1924, was redesigned many times in the early years of the organisation. In 1905, Montague M Bear, an engraver and member of the Rotary Club of Chicago, sketched a wagon wheel with thirteen spokes. When fellow club members began to complain that the design was static and lifeless, Bear added flourishes that made the wheel appear to ride on a bed of clouds. Unfortunately, some members felt the clouds looked like dust, defying the laws of gravity by being kicked up on both sides of the wheel. Bear responded by superimposing a banner with the words “Rotary Club” over the clouds.

In 1911, Secretary Chesley R Perry recommended that “action be taken by the National Association to establish the wheel as the basic part of the emblem of every Rotary club.” Clubs were invited to submit designs to an emblem committee before the 1912 convention in Duluth, Minnesota.

The Duluth convention provided some definition. “The emblem consists of the basic principle of a wheel with gears cut on the outer edge. The spokes are to be so designed as to indicate strength; the object of the gears being twofold; to relieve the plainness of the design, and symbolise power.”

The word "Rotary" appeared at the top and "International Association" at the bottom. Clubs were encouraged to use a similar design, placing the name of their city at the bottom in place of International Association. The number of spokes and cogs was unspecified. As a result, numerous variations on the emblem were in use by 1918. The Board appointed Charles Mackintosh, of the Rotary Club of Chicago, and Oscar Bjorge, of the Rotary Club of Duluth, to the Special Committee to Standardize the Rotary Emblem. Bjorge drafted an emblem with six spokes and 24 cogs, giving it a sturdy appearance. In this design, the number of teeth and spokes was intended to reflect a real, working gearwheel, and not any aspect of Rotary's history. In November 1919, the Board adopted Bjorge's design and a detailed description, and the 1921 convention formally approved them. For many years, descriptions of the emblem simply referred to a 1920 article in The Rotarian, "Redesigning the Rotary Wheel," which announced the Board's decision.

By 1924, Bjorge's design had been modified to include a keyway. This addition has been attributed to Will R Forker, of the Rotary Club of Los Angeles. He was reported to have said Bjorge's design made no provision for the transfer of power to or from a shaft, rendering the wheel idle. Forker perceived Rotary as a "living force," and inserting a keyway into the hub made the new wheel a "real worker."

In January 1924, the Board formally approved the emblem that was then in use. Not all written descriptions were updated immediately, however. To clear up any confusion caused by the various decisions about the emblem between 1912 and 1929, a standard description of the existing design, with a keyway, was approved by the 1929 convention.

The Rotary emblem, like Rotary's name and other logos, is a registered trademark. Clubs, districts, and Rotary entities are welcome to use the Rotary emblem subject to the guidelines for the use of the Rotary marks as set forth by the RI Board of Directors. These guidelines govern the use of the Rotary marks on all merchandise, promotional materials, and publications, including domain names and websites.

Ron Nethercutt

Rotary Club of Clark Centennial
District 3790 - Angeles City, Philippines

LUCKY HIM!

When Rotarian Dennis Dalby gave a recent talk to the club he entitled it "Lucky Me" and he went on to explain how, over many years, he had been so lucky - and still has one or two of his nine lives left. Due to shortage of time he had to omit one story of a real lucky escape and he has been asked to put the matter right.

Lucky Me! - Because of a naughty postcard

As I explained in my talk, because my balance mechanism could not stand violent aircraft manoeuvres I could never become a pilot as had been my Air Force ambition. As a result I had to change course and become a navigator. All this meant that I had to go back to various camps that I had been to before. One was at St. John's Wood near Regent Park in London where we did some basic training before being sent off to either Canada or Rhodesia.

We were to do some selection tests at Lords Cricket Ground and had been paraded outside our billets, which had been luxury flats. Before marching off we were usually issued with any mail, and that day was to be no exception. The sergeant in charge noticed that one cadet had been sent a rather naughty seaside postcard by his girlfriend and proceeded to make fun of him. All this delayed us by about one and a half minutes before we marched off.

This was the time of the Doodlebug raids and the sirens had sounded, but we marched on. We heard one Doodlebug coming our way but the engine was still running which usually meant that the thing was going further on. This one did not run on as normal but suddenly dived into some empty houses and exploded right where we would have been but for the delay in starting off. Lucky me! And lucky for the whole flight. We were thrown to the ground by the blast and I cracked my right knee on a kerb, and the knee required treatment just recently. We were all made practically deaf for a while and I still have some hearing problems.

Our very considerate sergeant, who had been at the very back of our group and had suffered no ill effects,

got us dusted down and back into our marching column as if nothing had happened. We had to climb over debris which was all over the road and we set off for the cricket ground.

On our way back to our billets we noticed some small shops in the area had put up notices, "Business as Usual" but they had very little of their windows remaining. The great wartime spirit!

Lucky Me - Not Quite

"Lucky Me", but not so lucky on every occasion. While working in Morpeth it was necessary for my family and me to live over the Gas Board showrooms in Newgate Street, as the previous Works Manager and Showroom Manager had done a swap of houses; the Works Manager had no children but the Showroom Manager had two and the Works house had a big garden ideal for a family. I had to follow on.

We had two children and it was a problem to keep them amused when the weather was bad. I had built a model railway and made all the necessary parts. Playing in the workshop kept the children happy for a time until Father got tired of them messing about. I suggested that they looked out of the window onto the street and let Daddy know when a nice 'Popsie' went past. This they thought was a great game and I had many calls to the window.

A day or so later we had been to Newcastle by bus. Coming home the bus was packed but someone had been kind enough to give Frances a seat, and she had Roy on her knee. I had Diane in my arms and she was looking along the row of passengers when suddenly in a little but loud voice she shouted out, 'Look Daddy, there is a lovely Popsie just behind you!'

Was my face red, but the girl just smiled. Not quite so lucky that time, but no lives lost.

Dennis Dalby

COGS & GEARS

News from Inner Wheel

Inner Wheel's first meeting after the summer recess was attended by District Chairman Sandra Knowles who gave an inspirational talk with the theme "Empathy Empowers". This related to her experiences in her professional life and the way that her career path developed leading to her becoming a Director of Nursing Services.

Once more we have had a request for knitted items for overseas service and this brings Edith Davidson to the fore with her prodigious knitting skills. Edith has knitted so many hats for the orphanage in Spitak, Armenia that apparently she has supplied almost the whole village and they are requesting that she slows down! But if any one does have any spare knitting wool, we would gladly accept it for other disaster and emergency requests. Oxfam are extremely grateful, as are regional charities for homeless people.

We were delighted to mark Marie Cooke's 90th Birthday with a basket of flowers in Inner Wheel colours during afternoon tea at Jesmond Dene Hotel. Marie has made our Birthday Cake for many years and can still be relied upon to produce mouth-watering cakes for all occasions.

The League of Friends at Alnwick Infirmary continues to be well supported by members of the club who undertake regular hospital shop trolley duties and fund raising. Several members attend and give active support to the Stroke Club, and support RNLI meetings. A full programme of speakers has been produced for the year. We have already enjoyed a visit from Roz Tinlin from Rothbury who demonstrated her skills as a chocolatier and told us about the background to her launch of the Coquetdale whisky John Barleycorn.

Meetings of the Inner Wheel Club take place on the second Thursday of the month at The Oaks Hotel at 7pm and we would welcome anyone with a Rotary connection to visit us to see our club in action. For more information contact our Secretary - Kathleen Bradford on 01665 - 606 788 or kathleen.bradford@northumbrian.info.

Anne Swailes

AQUABOX AT WIRKSWORTH

A report on the Aquabox project from Kathleen Bradford - roving reporter, honorary Rotarian, Inner Wheel Club Secretary and Editor's helpmeet.

I know many of you will be aware that Aquabox is a community support project co-ordinated by the Rotary Club of Wirksworth in Derbyshire – District 1220. In August 2011 Colin and I were in the vicinity of Wirksworth whilst on a Rotary caravan rally⁽¹⁾ in Ashbourne. The Rotarians from the Wirksworth Club were aware that several Rotary clubs represented at that rally had bought and packed Aquaboxes. They therefore arranged for us to have a guided tour of the factory unit where Aquaboxes are packed, checked and sealed before being stored pending distribution. The unit is entirely manned by volunteer staff but unfortunately because of financial restraints the unit is only open two days per week.



Upstairs on the mezzanine floor (shown top right) about ten men were very laboriously and meticulously assembling and testing the

filters which go into each Aquabox. We were told that the units are now based on sub-micron filters which are impenetrable to both bacteria and viruses. The Standard Aquabox Family Filter can produce one litre of safe drinking water per minute and the Community Aquafilter five litres per minute. There is also a Aquabox Gold which contains at least another ten items and a second filter pack to extend water purification for one family to well over six months.

On the ground floor the goods needed to fill Aquaboxes are stored – a vast array of cooking utensils, hygiene items, toys, basic tools and

¹ Intrigued? Interested? Check out our local rally next September. www.northumbrian.info/icfr



household items, all specifically purchased using funding from sponsors such as Rotary or Inner Wheel Clubs. What seemed like a small army, mainly



women, were packing the boxes and checking and re-packing those which had been packed by other community organisations. This was a real hive of industry with lots of laughter, singing and general fun. One woman told me that she would work there every day if she could because she had found genuine friendship as well as a sense of doing something worthwhile and valued.

It was pointed out that it can be more financially attractive to purchase the aid items centrally on a wholesale basis and pack them in Matlock and it also saves on the cost of delivery by Parcelforce.

One section of the warehouse was for goods which had been donated but were unsuitable for the boxes. There was a bone china tea set, enormous teddy bears, huge boxes of washing powder and several very interesting items of underwear – some even





made of paper! However, these goods did not go to waste. The volunteers have a market stall which they use to sell these items and the money goes directly back into purchasing new suitable items.

There is a large storage section in the factory where stacks of boxes were awaiting dispatch to East Africa. Unfortunately there had been a misunderstanding about the Rotary logo – it had been misinterpreted as a specific religious symbol which was unacceptable to some parts of the community there and it had to be removed before the boxes could be shipped out for distribution through an aid agency. We were told that this was a rare difficulty and that over 90,000 boxes have been dispatched since 1992. Should the demand for Aquabox Gold increase it may be that additional local support and/or warehouse capacity will have to be found.



The Rotary Club of Wirksworth can be rightly proud of their commitment to this project. What may not be widely known is that the Cleadon and District Rotary Club in Sunderland supports The Safe Water Trust and the Rotary District 1030 Aquafilter Trust pioneered membrane filters for developing countries. I was both impressed and moved

by this tour and hope that the Rotary involvement with Aquabox continues and that the technology continues to improve the delivery of safe water to those affected by emergencies world-wide.

Kathleen Bradford

SATELLITE CLUB

People interested in the possible formation of a satellite club under the aegis of Alnwick Rotary Club are now meeting on a fortnightly basis in the Oaks Hotel.

We'll have more on this in the next edition. In the meantime please contact Ian Walker (details on back page) or me (svp@alnwicksrotary.org) if you need to know more.



Marion Long

CONTACT INFO

Rotary Club of Alnwick

Meetings

Every Thursday at 12:30
White Swan Hotel, Bondgate Within
ALNWICK, NE66 1TD
01 665 - 602 109
info.whiteswan@classiclodges.co.uk

Club

Website: www.alnwickrotary.org
Club No: 18826 District No: 1030

President

James Bateman
01 665 - 605 185 president@alnwickrotary.org

Secretary

Ian Walker
01 665 - 604 375 secretary@alnwickrotary.org

If you want to know more about Alnwick Rotary Club please speak to our Secretary, Ian Walker.



ALNWICK DOTES

COPY FOR THE NEXT EDITION

The next edition of AlnwickDotes is planned for March/April. Please give your contributions to Graham Smith or to me by the middle of March.

Colin Bradford, Editor

COMING UP

December

- Thu 15th Christmas Lunch & Christmas Message
- Thu 22nd No meeting - Bagpacking @ Sainsbury's
- Thu 29th No meeting

January

- Thu 5th Club Council
Speaker finder: Graham Smith
- Thu 12th Business meeting (*No speaker*)
Meeting Host: George Stokoe
- Thu 19th *Speaker finder: Brian Straughan*
- Sat 21st Swimarathon
- Mon 23rd Rotary Day
- Thu 26th Burns Lunch
Meeting Host: Alan Symmonds

February

- Thu 2nd Club Council
Speaker finder: Jim Thompson
- Thu 2nd Visit of RIBI President Ray Burman
Tyneside Club – Mansion House, 7pm
- Thu 9th Business meeting – no speaker
Meeting Host: Margaret Thompson
- Thu 16th *Speaker finder: Ritchie Waddell*
- Thu 23rd Projects Committee
Speaker finder: Bill Bell

March

- Thu 1st Club Council
Speaker finder: Colin Bradford
- Thu 8th Business meeting (*No speaker*)
Meeting Host: Jim Browell
- Thu 15th *Speaker finder: Carnegie Brown*
- Fri 16th Charity Beetle Drive
- Thu 22nd *Speaker finder: Bill Callaghan*
- Thu 29th *Speaker finder: Alan Clark*

Future

- May 9th Charity Concert
- May 12th President's Night