

Rhythm: **4/4** Tempo: **120** Strum:

INTRO Count-In: 1 2 3 /g /b

C **C** **Am** **G** **Am**
F **G** **C** **C**

Verse [1] g b c When the

C night has **C** come, **Am** and the land is **Am** dark and the
F moon is the **G** only light we'll **C** se- - - - **C** e, No, I
C won't be a- **C** fraid, Oh I **Am** won't be a- **Am** fraid Just as
F long as you **G** stand, stand by **C** me. ↴

CHORUS ↴ So darlin', darlin'

C stand by **C** me, oh, **Am** stand by **Am** me, Oh
F stand, **G** stand by me, **C** stand by me. **C** :

Verse [2] ↴ If the

C sky . that we look up- **C** -on Should **Am** tum- -ble and **Am** fall or the
F mountains **G** **C** **C** I won't
C cry, . I won't **C** cry, no I **Am** won't shed a **Am** tear, Just as
F long as you **G** stand, stand by **C** me. **C**

Repeat **Chorus** [and darlin', darlin']

NB: See **VIDEO DEMO** of this song at <http://www.northumbrian.info/riffraff/songs.htm>

Stand By Me

INTRUMENTAL

[When the]

C night **C** has come, **Am** and the land **Am** is dark **Am** and the
F moon **G** is the only **C** light we'll see **C** e, **C** No I
C won't. **C** be a fraid, **Am** no I **Am** won't **Am** be a fraid **Am** Just as
F long **G** as you stand, **C** stand by me. **C**

OUTRO

C stand **C** by me, **Am** stand **Am** and darlin', darlin'.
F stand, **G** oh, **C** by me, **Am** Oh
C stand **C** by me, **Am** stand **Am** ever you're in trouble won't you
F stand, **G** oh, **C** by me, **C!** **C6>>>>** **Am** Oh



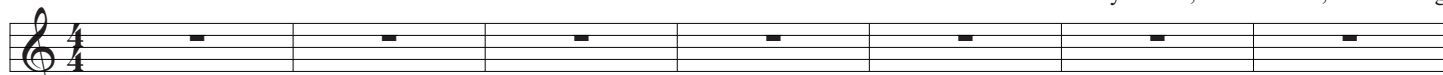
Bass Line

/g /b

c	c	g	b	c	c	c	b	a	a	g	a	a	a	g
f	f	f	a	g	g	g	b	c	c	g	b	c	c	

STAND BY ME

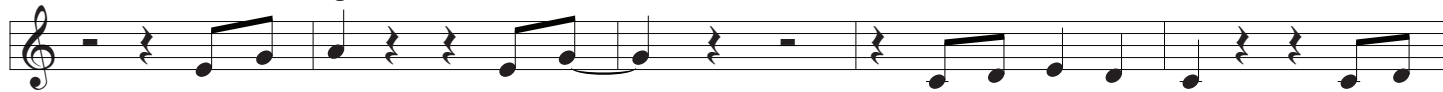
Jerry Lieber, Mike Stoller, Ben E King



C C Am Am F G C

Verse

When the night has come and the land is dark and the



mo - on is the on - ly light we'll see No, I



won't be a - fraid. Oh - I won't be a - fraid just as



Chorus

lo - ng as you stand stand b - y me. So dar - ling dar - ling



sta - nd by me - Oh - stand - by me oh

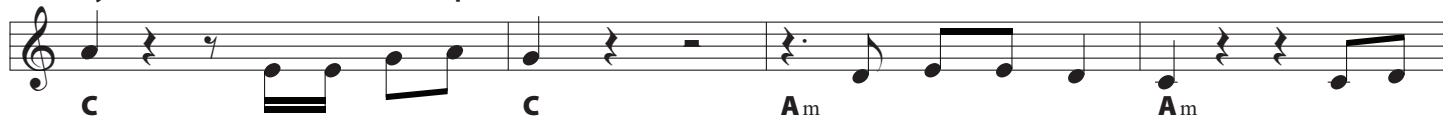


Verse

st - and - stand by me stand by me. If the



sky that we look up - on should tum - ble and fall and the



moun - tains should crum - ble in - to the sea I won't




cry I won't cry No - I won't shed a tear just as



C C A_m A_m

lo - ng as you stand stand b - y me. **Chorus** So dar - ling dar - ling




F G C C

sta - nd by me - sta - nd by me oh



C C A_m A_m

st - and - stand by me stand by me. **Outro** Dar - ling




F G C C

sta - nd by me - sta - nd by me oh



C C A_m A_m

st - and - stand by me stand by me. When - ev - er you're in trou - ble won't you




F G C C

sta - nd by me - sta - nd by me oh



C C A_m A_m

st - and - stand by me *rit.* stand by me.



F G C C C₆